



# SHREE BALAJI WIRE NETTING & Co.

Committed to you  
Committed to Quality





## About Us:

Gaining 40 years of work experience in Iron & steel market, Mr. Inder Chand Sand in 2007 Started Shree Balaji Wire Netting Industries India Pvt Ltd as he identified the scarcity of quality material that plagued the weldmesh industry. With no brand to trust, developers and contractor across South India were resorting to guesswork instead of using quality assured industrial goods. As pioneers in the industry and by taking the first mover's advantage in the market by supplying High Quality material made from JSW Low carbon high grade Wire Rod., we took it upon ourselves to reinvent this industry with meticulous planning, research, and testing. We had one mission; to make quality a non-negotiable aspect.

SBWIIPL with the focus to create a brand and provide Quality products launched its own products under its own brand "BALAJI" and was the first company in Weldmesh Segment to have a registered Brand for its various lines of products. The Company thrived with the able support of the management and its policy of continuous delivery of quality products and soon had the states of Tamil Nadu and Kerala as its major business audience apart from the traders and dealers of Karnataka.

Mr Inder Chand Sand is ably supported in the operations of the manufacturing facility and the management of the Company by Mr Vinit Sand and Mr Nishit Sand and the dedicated team of professionals working at different levels, Day in and Day out, over the last 14 Years

In 2014, for further expansion of SBWIIPL's steady and steep growth, Wholesale and Retail Outlet was opened in Bangalore under the brand and style of "Shree Balaji Wire netting and Co.". This strategic move helped SBWIIPL to further improve its market presence that SBWIIPL has gained over the years

## Some of our Major Clients

- Aero Show, Bengaluru -2019
- DRDO
- Indian Army
- Indian Railway
- Kempegowda International Airport
- Bannerghatta National Park & Bandipur National Park & Tiger Reserve
- Bandipur National Park
- Flipkart Warehouse, Bengaluru

# Core Values

Freedom & Openness

Relationship & Engagement

Passion & Energy

Initiative & resourcefulness

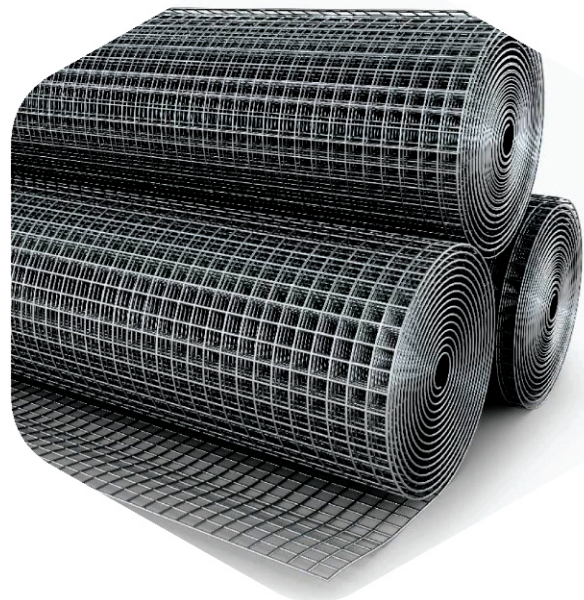
Transparency

## Product Catalogue

AT SBWIIPL, we offer a range of products that cater to various industrial requirements as well as specific household needs. Here is our list of best-selling products and categories,

### MS WELDMESH

Made From Low Carbon, High-Quality steel, MS weldmesh is one of our highly manufactured products with an annual capacity of 17,000 tons. We offer MS weldmesh in Sheet and Roll form which cater to needs of Embankments, Concrete Highways Anchorage, Grizzly, Primary Screen, Dividers, Guards of machine, garden, Houses and sheds of poultry, Cattle farms and more

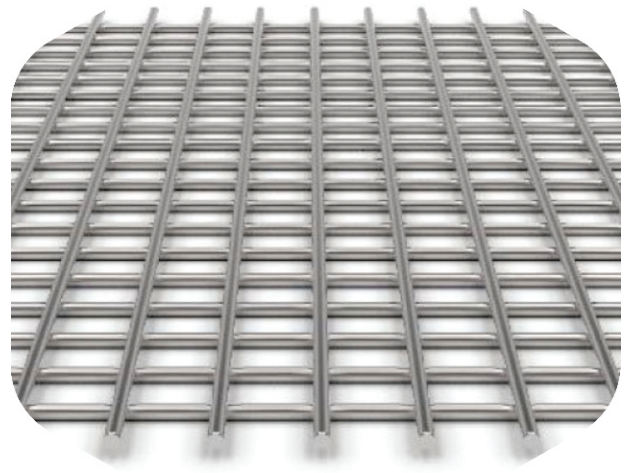


Description	Size	Min Thickness	Max Thickness	Width
MS Weld Mesh	12MM- 17MM	1.00 MM	2.20 MM	2Ft- 6Ft
MS Weld Mesh	25MM – 250MM	2.00 MM	5.20 MM	3Ft – 8FT

Note: Material Above 6Ft must be of minimum thickness of 3.0MM

## GI WELDMESH

Made from hot dip galvanized wire with GSM ranging from 30 to 120 GSM, GI Weld Mesh is best used in industries for security, storage, and safety, in construction for reinforcement, rendering and guarding and in horticulture for making cages, pens, feed racks and for screening purposes.



Description	Size	Min Thickness	Max Thickness	Width
GI Weld Mesh	12MM- 17MM	1.00 MM	2.20 MM	2Ft- 6Ft
GI Weld Mesh	25MM – 250MM	1.60 MM	5.20 MM	3Ft – 8FT

Note: Material Above 6Ft must be of minimum thickness of 2.5MM

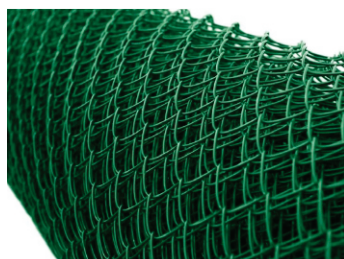
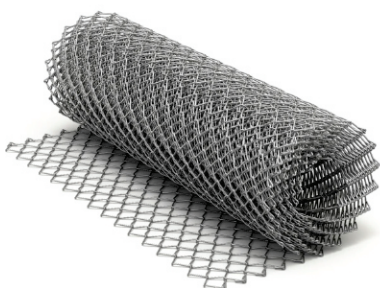


## CHAIN LINK

We are highly acknowledged for a remarkable range of long-lasting Galvanized Chain Link Fencing with rust-free rugged design and superior quality which comply with ASTM and BS standards. These are available in Zinc as well as PVC Coating.

Description	Size	Min Thickness	Max Thickness	Width
GI & PVC CHAINLINK	30MM- 40MM	2.00 MM	3.20 MM	2Ft- 15Ft
GI & PVC CHAINLINK	50MM – 100MM	2.00 MM	5.00 MM	3Ft – 16FT

Note: PVC Coating chain link is made available with coating of:1.00 MM, 1.50 MM or 2.0 MM over GI Wire



## BARBED WIRE

Providing an optimum quality range of Iron Barbed Wires, our wires are precisely manufactured using high grade hot dip GI material and latest technology. Owing to its anti-corrosive and easy installation features, these are widely used for security purposes, industrial plots and agricultural farms. It can also be customised in PVC coated finish which assists in enhancing the service life of these wire fencing.



Line wire	Barbing wire	Pitch	Distance covered per Kg (Approx.)
2.5 mm (12 swg)	2.5 mm (12 swg)	75 mm (3 inch)	6 m (20 ft)
2.5 mm (12 swg)	2 mm (14 swg)	75 mm (3 inch)	8 m (25 ft)
2 mm (14 swg)	2 mm (14 swg)	75 mm (3 inch)	10 m (33 ft)

Note: Material Above 6Ft must be of minimum thickness of 2.5MM



## PVC GI WIRE

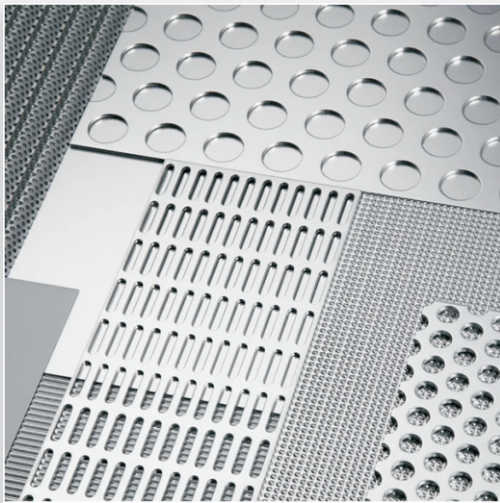
Precisely designed at our highly sophisticated manufacturing facilities, we offer PVC coated GI Wires that are highly durable and heat resistant with a flawless finish. They are available in green and blue colours. The most popular use for PVC coated wire is in the construction of chain link fences for industrial and residential security fences for freeways/highways and tennis courts.

GI Wire	PVC Coating	Total thickness
1.60 mm	1.00 mm	2.60 mm
2.00 mm	1.00 mm	3.00 mm
2.50 mm	1.50 mm	4.00 mm
3.00 mm	1.00 mm	4.00 mm
2.50 mm	2.00 mm	4.50 mm
3.00 mm	2.00 mm	5.00 mm
3.50 mm	1.50 mm	5.00 mm

Note: Material Above 6Ft must be of minimum thickness of 2.5MM

## MS BINDING WIRE

We have marked a distinct position in the market by offering an excellent quality array of Mild Steel Binding Wires. Used for the purpose of tying in the field of construction, binding wires are prepared by the process of annealing which provides them flexibility, softness and required strength.



## PERFORATED SHEETS

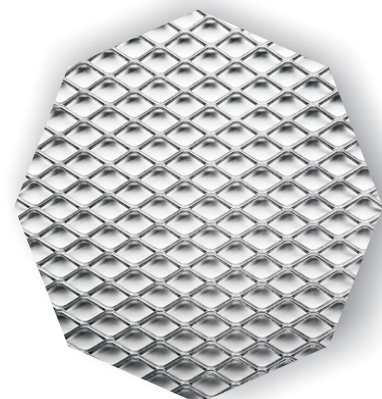
We have excelled in the business of manufacturing and supplying Perforated Sheets of matchless quality. Designed to perfection, the MS Perforated Sheets available with us are widely used for making window panels, air conditioner panels, wall panels etc. These MS Perforated Sheets are made using premium grade mild steel, Stainless Steel, Galvanized Iron Sheet and Aluminium Perforated Sheet.

## EXPANDED MESH

Expanded metal mesh is very efficient for use in several industrial applications. It is stronger than thin wire mesh, and it also provides better airflow and drainage when compared to normal sheet metal. Additionally, the expanded mesh has more tensile strength and is an excellent option for industrial applications.

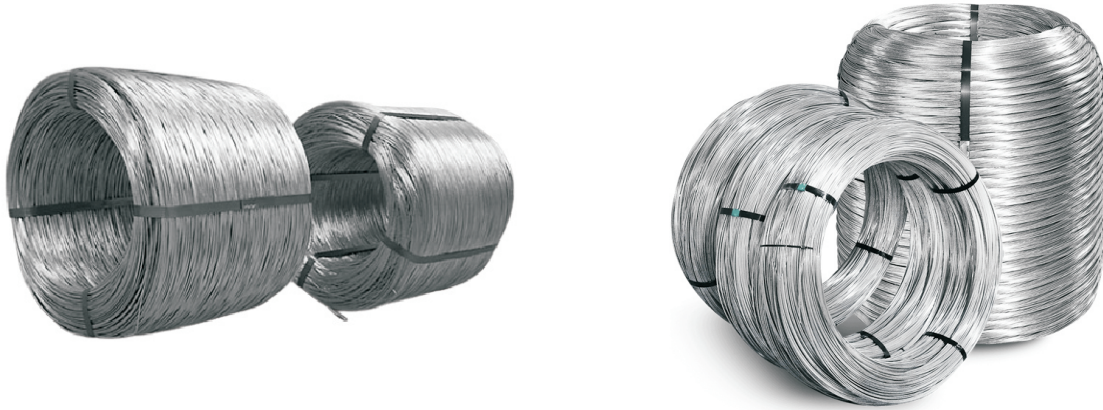
Expanded Metal Mesh is manufactured with a diverse range of specifications. Several different metals are used in its manufacturing to suit a wide range of applications—both as filter elements and filter support. We manufacture Expanded Metal Mesh from the following metal sheets:

- Mild Steel (M.S.)
- Stainless Steel (S.S.)
- Galvanized Iron (G.I.)
- Aluminium



## GI WIRE

GI Wires is a highly durable and tensile wired element which is formed by drawing the mild steel into thin sections which is then passed through the zinc coating to give a galvanized finish for excellent surface shine and resistance against corrosion. It is most commonly used for the manufacturing of various types of meshed elements which includes fences, gauges and many more. It is available in various different sizes as per the wire diameter 0.8 to 5.2 millimeter.



## CONCERTINA WIRE

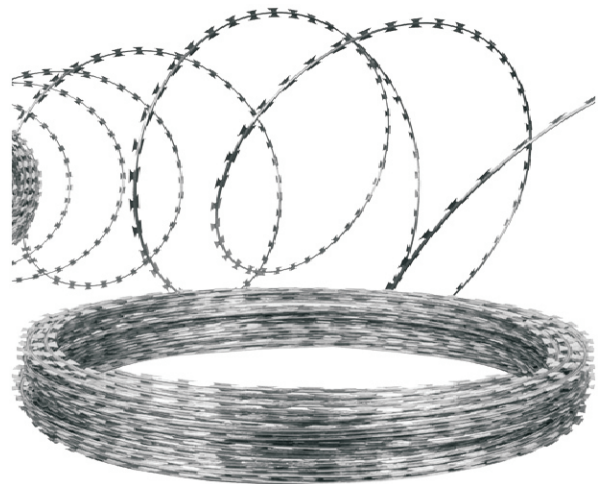
Concertina wire is composed of many circles. The clips tie two adjacent loops, and a spiral concertina wire fencing is created. The diameter of the opening circle is usually kept 5 to 10% less than the original size. The clipped spiral concertina barbed wire is specially designed to add an extra shield to your property. It is ensured that your property remains safe and sheltered once you install this fencing in your boundary.

The installation of Concertina Barbed Tape results in such a structure that it leaves no place of trespassing. Perhaps that is the reason, concertina barbed wire always gains an additional mileage in preference, if compared with other fencing methods.

APPLICATIONS OF CONCERTINA WIRE:

- Switch Yards
- Prisons
- International Borders
- Power Plants
- Military Bases
- Steel Plants
- Important Institutions

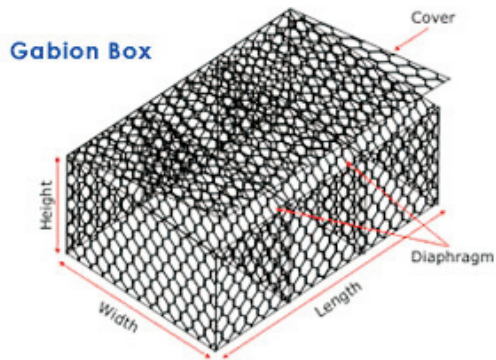
For Export, we supply all the Variations of Concertina Razor Wire as covered under Barbed Tape Obstacles (BTO) & Concertina Barbed Tape (CBT) List including BTO-10, BTO-12, BTO-22, BTO-30, CBT- 60 and CBT 65.



## GABION WIRE MESH BOXES

Double Twisted Hexagonal Mesh Gabions and Weldmesh Gabion are rectangular wire mesh baskets filled with rock at the project site to form malleable, permeable, monolithic structures such as retaining walls and structures for various types of civil projects.

Gabion Wire Mesh Boxes used widely for dam barriers, soil erosions, river banks, water diversion and other activities near sea shore.



## MS WIRE ROD

Wire rod is a long steel semi-finished product manufactured by hot rolling billets on continuous rolling mills. It has a round cross-section and is wound up in coils.

Unlike other steel products, wire rod exhibits a significant commodity range variety; based on its chemical composition the following families of products and their differing corresponding uses can be identified:

- mild steel rod, used to manufacture welded mesh and drawn rods (black, annealed and coated)
- wire rod with medium or high carbon content, used to manufacture drawn
- welding rod
- special steel rods used in hot and cold die-pressing, drawing and extrusion.







**FOR MORE DETAILS:**



+91 - 81050 00266  
+91 - 99020 64557  
+91 - 89042 89802



[www.shreebalajiwirenetting.com](http://www.shreebalajiwirenetting.com)



24-D, KIADB, Hosur Road, Guest Line Hotel, BTM 2nd Stage, Bengaluru-562107, Karnataka, India